

Injury attendances to North Manchester General Hospital Emergency Department

October 2010 to September 2011

This report summarises recorded injury attendances to North Manchester General Hospital Emergency Department (ED) between October 2010 and September 2011.

Between October 2010 and September 2011 there were 32,208 injury attendances to North Manchester General Hospital ED. Males accounted for over half (55%) of all attendances. The month with the highest attendances was May (n=2,991) with November (n=2,364) having the lowest attendances (**Figure 1**). The majority (61%) of attendances were recorded as other injury. Of the specified injury groups falls (21%) accounted for the highest proportion followed by road traffic collision (RTC) (7%) (**Table 1**).

For all injuries the highest proportion of attendances were for persons aged 5 to 19 (25%) and 20 to 34 years (23%) (**Figure 2**). Over a third (36%) of fall attendees were aged 65 or over. Almost two-fifths (39%) of deliberate self-harm (DSH) attendees were aged 20 to 34 years (**Figure 3**).

Table 2 shows the location of the incident of injury attendances. Over a half (51%) of injuries occurred in the home. Nearly a fifth (15%) of injuries occurred in a public place with a smaller proportion occurring at an educational establishment (5%) or at work (3%). Almost six in ten (56%) falls occurred in the home.

Table 3 shows the ethnicity of attendees to North Manchester General Hospital ED. Over three-quarters (77%) were white, 6% were Pakistani and 4% were black.

The disposal of a patient can give an indication of the severity of the injuries sustained. Nearly six in ten (59%) attendees were discharged, almost three in ten (29%) were referred and 10% were admitted (**Table 4**). Over seven in ten (73%) RTC attendees were discharged (**Table 5**).

Table 6 shows the arrival method of attendances at North Manchester General Hospital ED. Seven in ten (70%) arrived by private transport while nearly a fifth (18%) arrived by ambulance.

Table 7 presents data for assault attendances to North Manchester ED. Nearly three-quarters (73%) of assault attendees were male and nearly a half (46%) were aged 20 to 34 years. Over two-fifths (41%) of assaults occurred in a public place, and over a quarter (27%) attended the ED on weekend nights.

Figure 1: North Manchester General Hospital ED: Total injury attendances by gender and month, October 2010 to September 2011

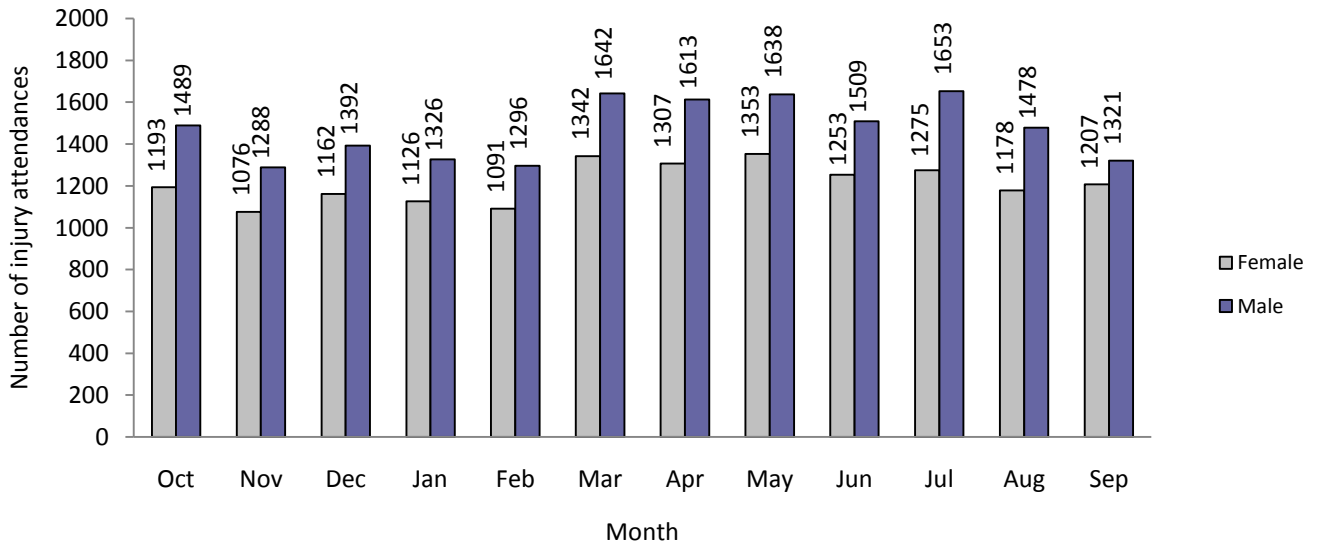
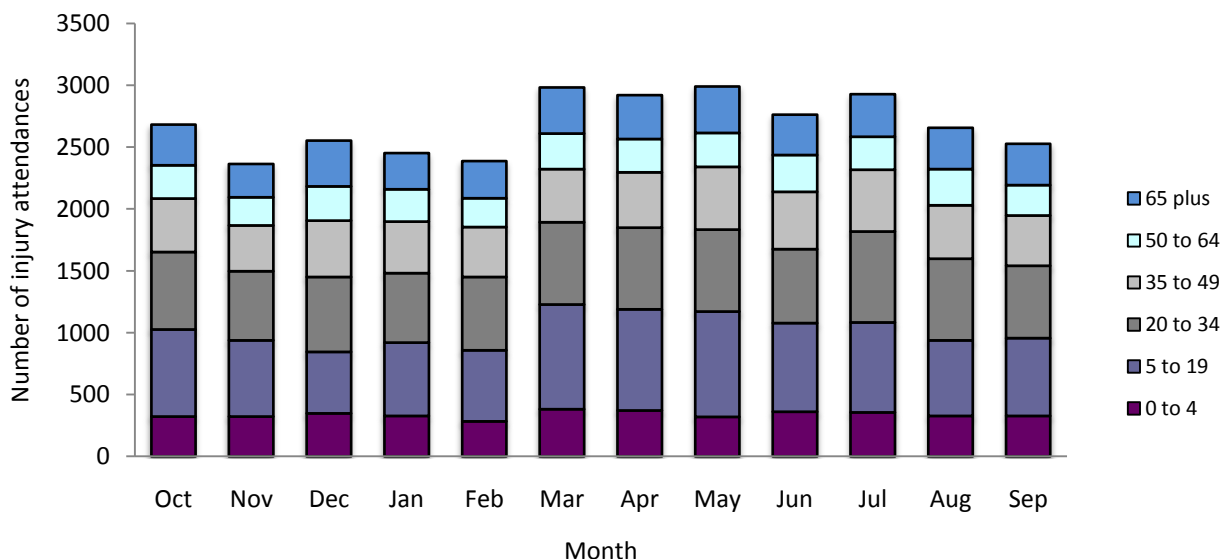


Table 1: North Manchester General Hospital ED: Total injury attendances by injury group and month, October 2010 to September 2011^{1*}

Injury group	Oct	Nov	Dec	Jan	Feb	Mar	Apr	May	Jun	Jul	Aug	Sep	Total	%
Other injury	1631	1417	1423	1499	1513	1958	1733	1927	1776	1755	1624	1542	19798	61
Fall	538	486	692	512	468	613	716	557	548	622	531	538	6821	21
RTC	223	209	216	190	183	165	163	206	158	229	221	192	2355	7
Assault	143	115	106	126	107	116	150	138	97	129	91	117	1435	4
Burns & scalds	77	83	68	58	63	65	59	62	81	70	65	53	804	2
Bites & stings	46	35	38	38	24	38	64	57	77	97	89	63	666	2
DSH	24	19	11	29	29	29	35	44	25	26	35	23	329	1
Total	2682	2364	2554	2452	2387	2984	2920	2991	2762	2928	2656	2528	32208	100

*Percentages may not equal 100 due to rounding.

Figure 2: North Manchester General Hospital ED: Total injury attendances by age group and month, October 2010 to September 2011



¹ Due to low numbers firework injury (n=9), sports injury (n<5), drowning/immersion (n<5) and electrical accident (n=26) have been included in other injury.

Figure 3: North Manchester General Hospital ED: Total injury attendances by age group and injury group (excluding other injury), October 2010 to September 2011

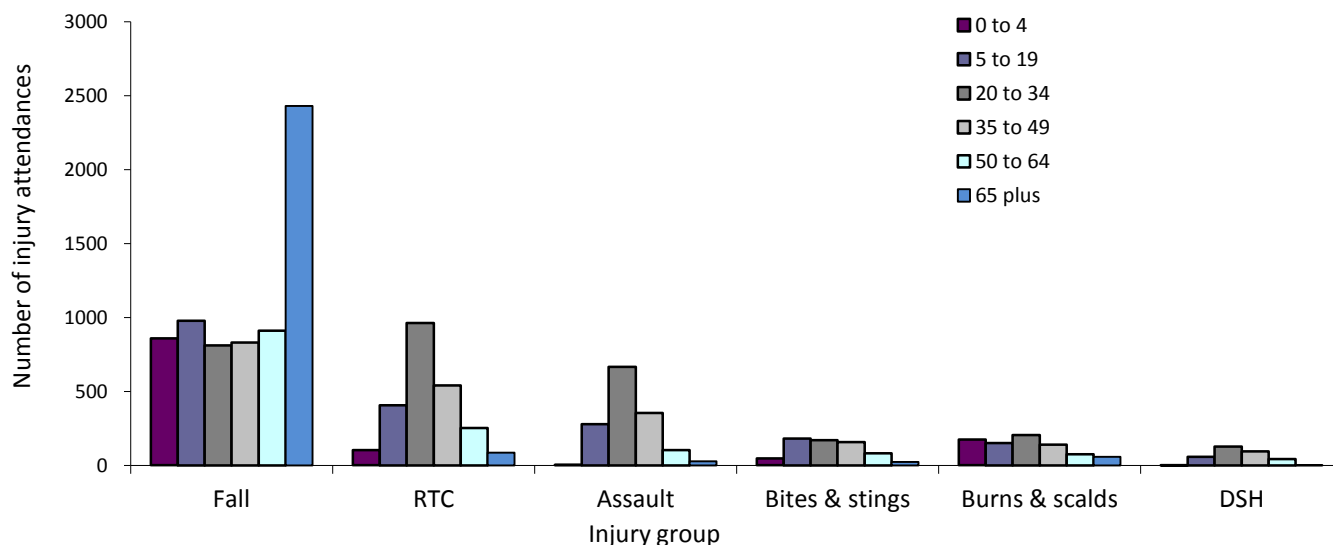


Table 2: North Manchester General Hospital ED: Total injury attendances by location of incident and injury group, October 2010 to September 2011^{2*}

Location	Assault		Bites & stings		Burns & scalds		DSH		Fall		Other injury		RTC		Total	
	n	%	n	%	n	%	n	%	n	%	n	%	n	%	n	%
Home	381	27	291	44	458	57	225	68	3843	56	11104	56	251	11	16553	51
Other	343	24	138	21	75	9	63	19	682	10	3416	17	1965	83	6682	21
Public place	592	41	167	25	28	3	29	9	1562	23	2491	13	82	3	4951	15
Educational establishment	30	2	12	2	10	1	***	0	202	3	1294	7	***	0	1550	5
Unknown	43	3	34	5	168	21	11	3	386	6	651	3	52	2	1345	4
Work	46	3	24	4	65	8	***	2	146	2	842	4	***	0	1127	3
Total	1435	100	666	100	804	100	329	100	6821	100	19798	100	2355	100	32208	100

*Percentages may not equal 100 due to rounding.

Table 3: North Manchester General Hospital ED: Total injury attendances by ethnicity and month, October 2010 to September 2011³

Ethnicity	Oct	Nov	Dec	Jan	Feb	Mar	Apr	May	Jun	Jul	Aug	Sep	Total	%
White	2080	1822	1904	1871	1859	2322	2260	2323	2155	2236	2103	1950	24885	77
Pakistani	158	146	174	158	134	186	181	183	183	217	175	185	2080	6
Black	127	102	133	115	115	116	139	138	108	109	98	90	1390	4
Not known	86	96	96	104	96	128	123	115	98	123	99	103	1267	4
Any other ethnic group	100	81	113	105	79	99	98	105	101	114	75	89	1159	4
Other Asian background	61	47	61	46	46	58	44	36	50	39	28	28	544	2
Mixed	43	40	45	33	31	40	41	60	37	49	42	47	508	2
Indian	18	20	14	10	15	27	23	17	24	22	15	19	224	1
Chinese	***	***	***	***	***	8	***	***	***	14	13	***	121	0
Bangladeshi	***	***	***	***	***	0	***	***	***	5	8	***	30	0
Total	2682	2364	2554	2452	2387	2984	2920	2991	2762	2928	2656	2528	32208	100

² Please note that all numbers less than five have been suppressed in line with patient confidentiality and if there is only one number <5 in a category then two numbers will be suppressed at the next level.

³ White = Irish, British, other white background; Mixed = white and black, white and Asian, mixed any other; Other = any other ethnic group, any other Asian background; Black = African, Caribbean, other black.

Table 4: North Manchester General Hospital ED: Total injury attendances by method of disposal and month, October 2010 to September 2011⁴

Disposal	Oct	Nov	Dec	Jan	Feb	Mar	Apr	May	Jun	Jul	Aug	Sep	Total	%
Discharged	1595	1330	1416	1450	1367	1798	1682	1726	1674	1741	1662	1626	19067	59
Referral/follow-up	750	756	803	696	721	865	877	931	770	820	695	619	9303	29
Admitted	279	230	265	250	254	271	271	277	271	306	256	230	3160	10
Other	58	48	70	56	45	50	90	57	47	61	43	53	678	2
Total	2682	2364	2554	2452	2387	2984	2920	2991	2762	2928	2656	2528	32208	100

Table 5: North Manchester General Hospital ED: Total injury attendances by method of disposal and injury group, October 2010 to September 2011*

Disposal	Assault		Bites & stings		Burns & scalds		DSH		Fall		Other injury		RTC		Total	
	n	%	n	%	n	%	n	%	n	%	n	%	n	%	n	%
Discharged	718	50	422	63	303	38	143	43	3490	51	12266	62	1725	73	19067	59
Referral/follow-up	290	20	221	33	386	48	38	12	1645	24	6282	32	441	19	9303	29
Admitted	230	16	***	3	***	10	79	24	1471	22	1167	6	113	5	3160	10
Other	197	14	***	0	***	4	69	21	215	3	83	0	76	3	678	2
Total	1435	100	666	100	804	100	329	100	6821	100	19798	100	2355	100	32208	100

*Percentages may not equal 100 due to rounding.

Table 6: North Manchester General Hospital ED: Total injury attendances by mode of arrival and month, October 2010 to September 2011*

Arrival mode	Oct	Nov	Dec	Jan	Feb	Mar	Apr	May	Jun	Jul	Aug	Sep	Total	%
Private transport	1830	1676	1715	1715	1636	2145	2084	2150	1917	2051	1889	1780	22588	70
Ambulance	514	429	509	472	421	506	559	519	468	546	438	466	5847	18
Other	96	67	100	78	110	149	66	86	105	85	105	82	1129	4
Taxi	80	50	74	51	70	52	59	72	74	76	52	52	762	2
Not recorded	45	47	46	34	48	43	60	73	82	64	79	56	677	2
Foot	42	35	42	36	42	34	51	30	43	48	44	29	476	1
Public transport	52	37	39	36	40	41	29	35	45	30	32	42	458	1
Police	11	14	15	11	10	7	10	15	16	14	13	6	142	0
Unknown	***	***	8	***	***	***	***	***	7	***	***	***	93	0
Work transport	***	***	6	***	***	***	***	***	5	***	***	***	36	0
Total	2682	2364	2554	2452	2387	2984	2920	2991	2762	2928	2656	2528	32208	100

*Percentages may not equal 100 due to rounding.

⁴ Admitted=admitted to hospital/became a lodged patient of the same health care provider; Discharged=discharged - did not require any follow up treatment; Referral/follow-up =discharged - follow up treatment to be provided by GP, referred to ED clinic, referred to fracture clinic, referred to other out-patient clinic, referred to other health care professional; Other=died in department, left department before being treated, left department having refused treatment, other.

Table 7: North Manchester General Hospital ED: Assault attendances by gender, incident location, age group and day/time of attendance, October 2010 to September 2011**

	Assaults (n=1,435)	All injuries (n=32,208)
Gender	%	%
Female	27	45
Male	73	55
Location		
Public place	41	15
Home	27	51
Other	24	21
Work	3	3
Educational establishment	2	5
Not recorded	3	3
Age group		
0 - 4	0	13
5 - 19	19	25
20 - 34	46	23
35 - 49	25	16
50 - 64	7	10
65 plus	2	12
Day & time		
Weekend nights*	27	9
Weekend days	22	20
Weekdays	51	70

*8pm to 4am, Friday night/Saturday morning; Saturday night/Sunday morning; Sunday night/Monday morning

**Percentages may not equal 100 due to rounding

Author: Ian Warren, Published: December 2011

For further information please contact: Centre for Public Health, Research Directorate, Liverpool John Moores University, 2nd Floor, Henry Cotton Building, 15-21 Webster Street, Liverpool, L3 2ET, Tel: 0151 231 4513 or Email: ij.warren@ljmu.ac.uk

Website: www.tiig.info (data requests should be made through the website)